

RESOLUTION NO. 08-85

RESOLUTION EXPANDING RURAL SPECIAL  
IMPROVEMENT MAINTENANCE DISTRICT #726M  
(HILL ESTATES SUBDIVISION)

WHEREAS, a petition signed by one hundred percent (100%) of the freeholders of the proposed district expansion has been submitted to the Board of County Commissioners for the expansion of a special improvement maintenance district for the maintenance of said streets and,

WHEREAS, the Owners of lots 7, 8, 9, 10, 11, 12, 13, 14, 15, 16, and 17 Hill Estates Subdivision 3<sup>rd</sup> Filing Phases 2 & 3 (described in Exhibit A), have requested to be included in RSID 726M and have requested the Board of County Commissioners to expand the boundaries of RSID 726M; and

WHEREAS, the boundaries of the expanded district are described as Lots 1, 3, 4, 5 Block 1 Hill Estates Sub. 1<sup>st</sup> Filing; Lots 1, 2, 3, 4, 5 Block 2 Hill Estates Sub. 2<sup>nd</sup> Filing, Lots 1, 2, 3, 4, 6 Hill Estates Sub. 3<sup>rd</sup> Filing Phase 1; Lots 7, 8, 9, 10, 11, 12, 13, 14, 15, 16, 17 Hill Estates Sub. 3<sup>rd</sup> Filing Phases 2 & 3, Yellowstone County, Montana, (Exhibit A) and more particularly shown in Exhibit B (map), and

WHEREAS, pursuant to §7-12-2161(4), MCA, the Commissioners have the power of changing, by resolution, the boundaries of any maintenance district not more than once a year; and

WHEREAS the boundaries of RSID 726M have not been changed within the last year, and

WHEREAS, the Clerk and Recorder published the Notice of the passage of Resolution of Intent to Expand the District in the Billings Gazette on August 22<sup>nd</sup> and August 29<sup>th</sup>, 2008, and mailed a copy of the Notice to every person, firm or corporation owning property in the District; and,

WHEREAS, the Board of County Commissioners of Yellowstone County, Montana met in regular session to hear all written or verbal testimony either for or against the creation of said proposed District.

NOW, THEREFORE, BE IT RESOLVED by the Board of County Commissioners of Yellowstone County, Montana, deeming the public interest or convenience require, and having received an adequate Petition for the expansion of the Rural Special Improvement Maintenance District, intends to expand the following described Rural Special Improvement Maintenance District:

- 1. DESCRIPTION OF IMPROVEMENTS, DESCRIPTION OF MAINTENANCE, METHOD OF ASSESSMENT AND ESTIMATED COSTS.** Assessments collected on behalf of this district shall be used for the maintenance, preservation, and repair of the streets located within the boundaries of this district. All of the costs of the district shall be assessed equally on a per lot method for existing and future lots. Estimated costs are shown in Exhibit C, but costs shown are not exclusive of other eligible street expenditures.
- 2. DURATION.** The district shall be deemed to be perpetual in nature unless absorbed and replaced by another district or municipality.

PASSED AND ADOPTED by the Board of County Commissioners of Yellowstone  
County, Montana, this 30<sup>th</sup> day of September, 2008.

BOARD OF COUNTY COMMISSIONERS  
YELLOWSTONE COUNTY, MONTANA

  
James E. Reno, Chairman

*Absent*  
John Ostlund, Member

*Bill Kennedy*  
Bill Kennedy, Member

(SEAL)  
ATTEST:

  
Tony Nave, Clerk & Recorder  
Yellowstone County, Montana

EXHIBIT B

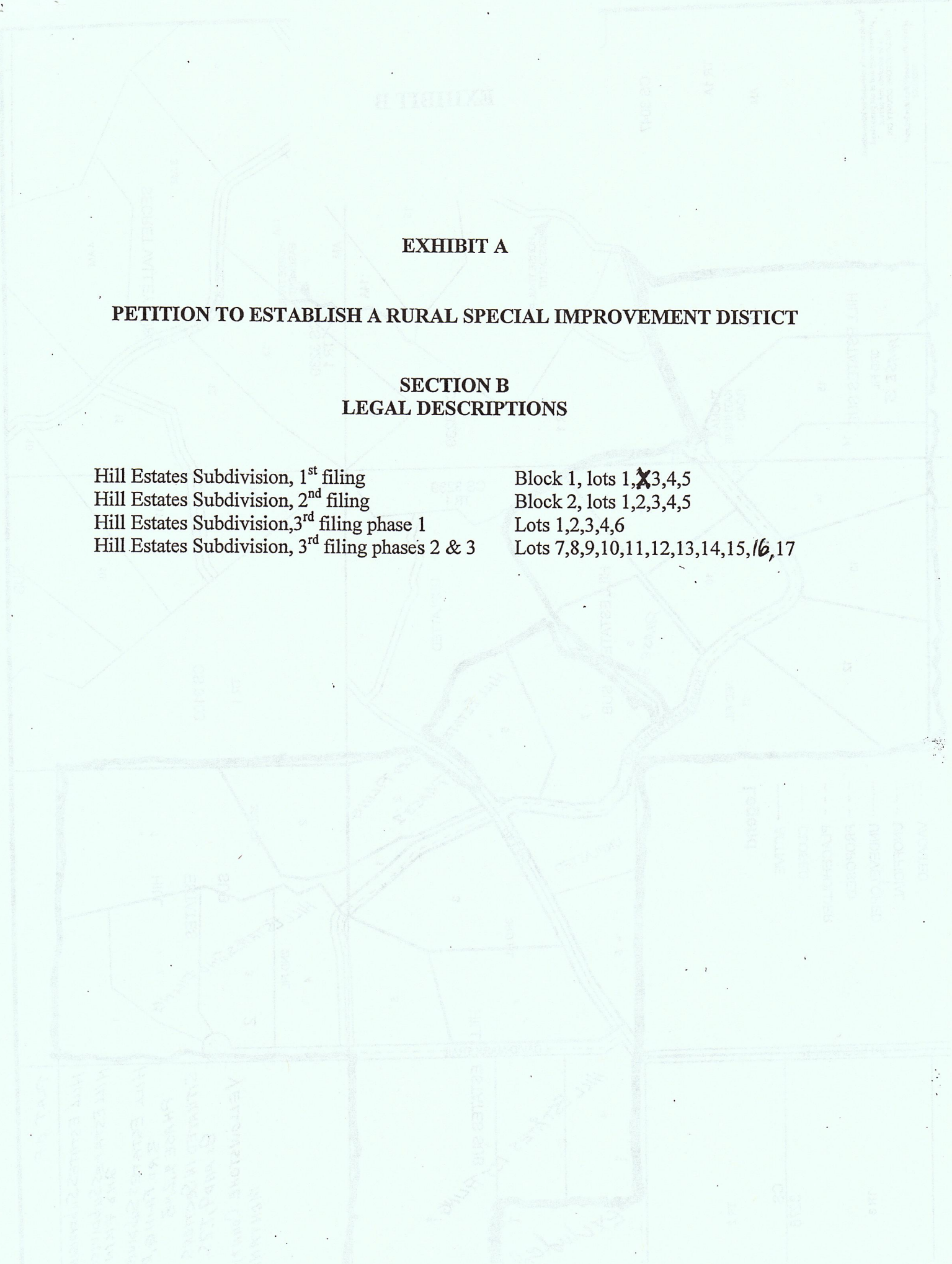
**EXHIBIT A**

**PETITION TO ESTABLISH A RURAL SPECIAL IMPROVEMENT DISTRICT**

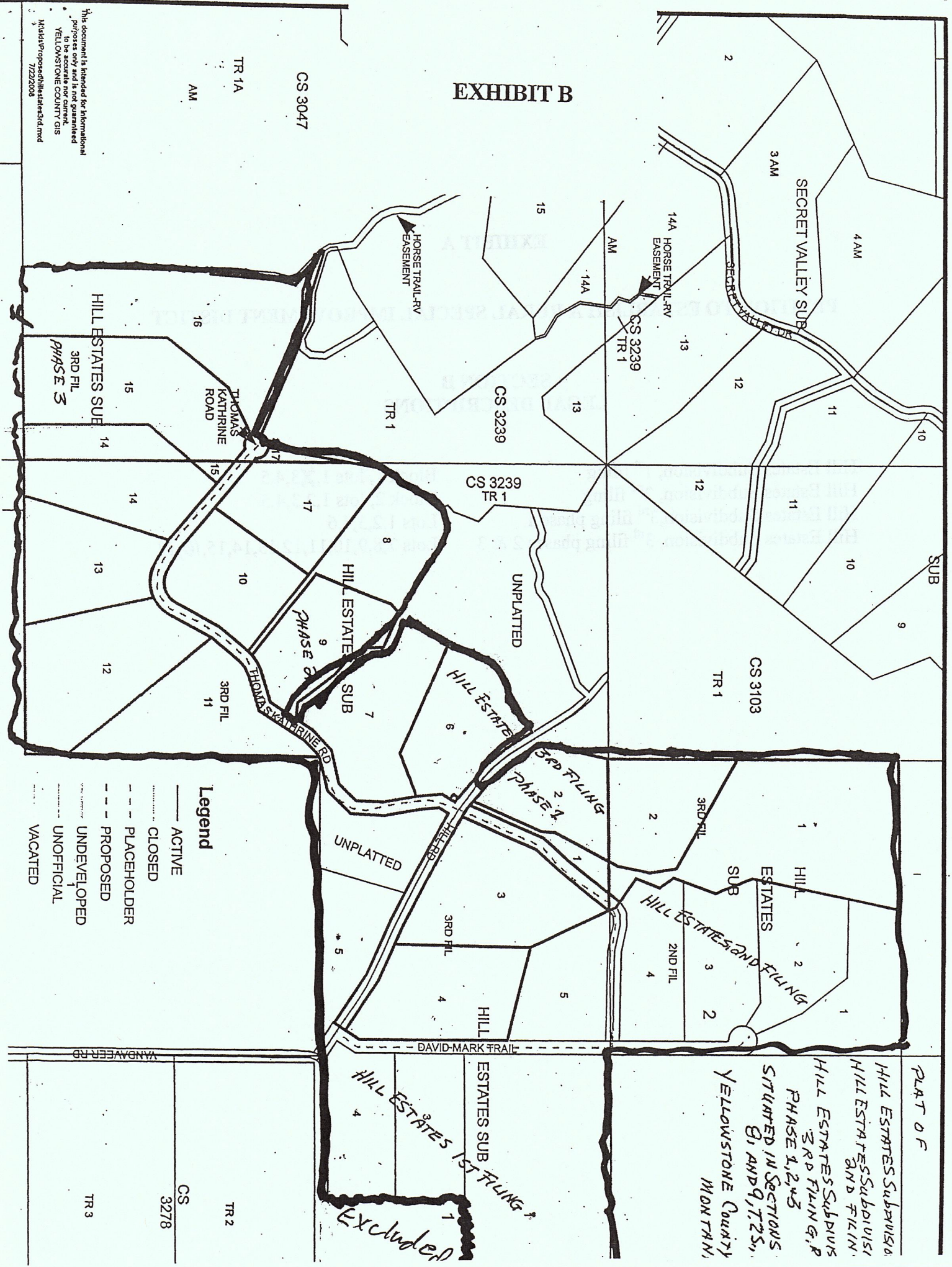
**SECTION B  
LEGAL DESCRIPTIONS**

Hill Estates Subdivision, 1<sup>st</sup> filing  
 Hill Estates Subdivision, 2<sup>nd</sup> filing  
 Hill Estates Subdivision, 3<sup>rd</sup> filing phase 1  
 Hill Estates Subdivision, 3<sup>rd</sup> filing phases 2 & 3

Block 1, lots 1, ~~3~~, 4, 5  
 Block 2, lots 1, 2, 3, 4, 5  
 Lots 1, 2, 3, 4, 6  
 Lots 7, 8, 9, 10, 11, 12, 13, 14, 15, ~~16~~, 17



**EXHIBIT B**



**Legend**

- ACTIVE
- ..... CLOSED
- - - PLACEHOLDER
- - - PROPOSED
- ..... UNDEVELOPED
- ..... UNOFFICIAL
- ..... VACATED

PLAT OF

HILL ESTATES SUBDIVISION  
 HILL ESTATES SUBDIVISION  
 AND FILING  
 HILL ESTATES SUBDIVISION  
 3RD FILING PHASE 1, 2, & 3  
 SITUATED IN SECTIONS  
 B, AND D, T.25S.,  
 YELLOWSTONE COUNTY  
 MONTANA,

HILL ESTATES 1ST FILING  
 ESTATES SUB  
 HILL ESTATES 1ST FILING  
 EXCLUDED

This document is intended for informational purposes only and should not be relied upon for legal or financial purposes. It is not a warranty of accuracy. YELLOWSTONE COUNTY GIS  
 M:\data\Proposed\Hill Estates\3rd.mxd  
 7/22/2008

TR 2  
 CS 3278  
 TR 3

EXPAND

PETITION TO ~~ESTABLISH~~ A RURAL SPECIAL IMPROVEMENT DISTRICT (RSID)

EXHIBIT C

ESTIMATED ANNUAL MAINTENANCE COST

FALL MAINTENANCE:

ACTIVITY	ESTIMATED COST
Road Grading	\$ 12.50 per lot
	\$

WINTER MAINTENANCE:

ACTIVITY	ESTIMATED COST
snow plowing + sanding	\$ 50.00 per lot
	\$

SPRING MAINTENANCE:

ACTIVITY	ESTIMATED COST
Road Grading	\$ 12.50 per lot
	\$

SUMMER MAINTENANCE:

ACTIVITY	ESTIMATED COST
Road Grading	\$ 12.50 per lot
Weed control	\$ 12.50 per lot

TOTAL ESTIMATED ANNUAL MAINTENANCE COST:

\$ 100.00 per lot

EXPAND

PETITION TO ESTABLISH A RURAL SPECIAL IMPROVEMENT DISTRICT (RSID)

EXHIBIT D

METHOD OF ASSESSMENT

CHOOSE A METHOD OF ASSESSMENT:

Square Footage

Equal Amount

Front Footage

Other (Describe)

\_\_\_\_\_  
\_\_\_\_\_  
\_\_\_\_\_  
\_\_\_\_\_  
\_\_\_\_\_